



GAT MONTHLY MEMBERSHIP PROGRESS REPORT

Results as of: 6/30/2023

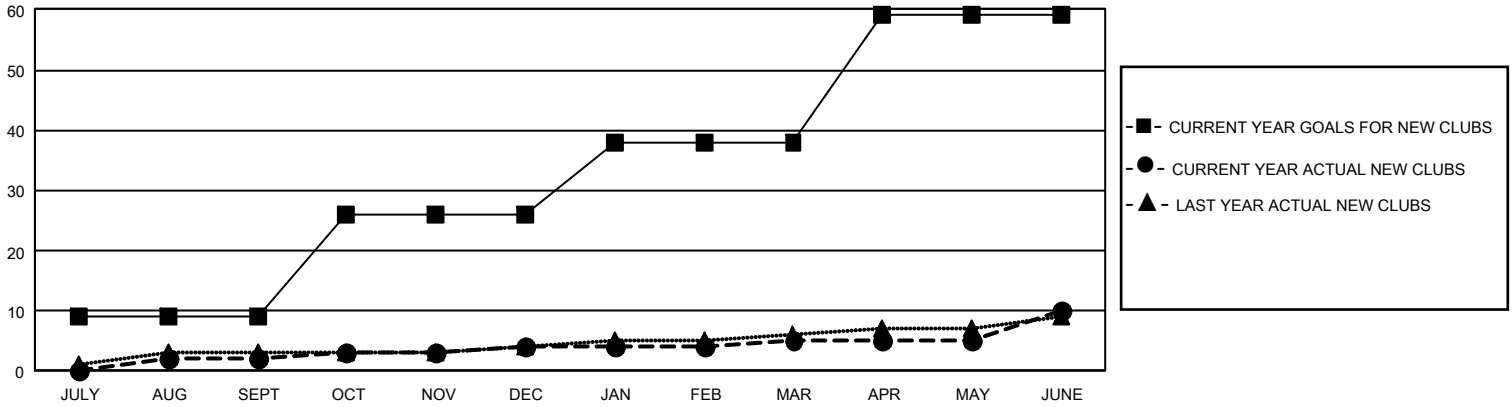
GMT Constitutional Area 1, Group A

REPORT DOES NOT INCLUDE CLUBS IN UNDISTRICTED AREAS.

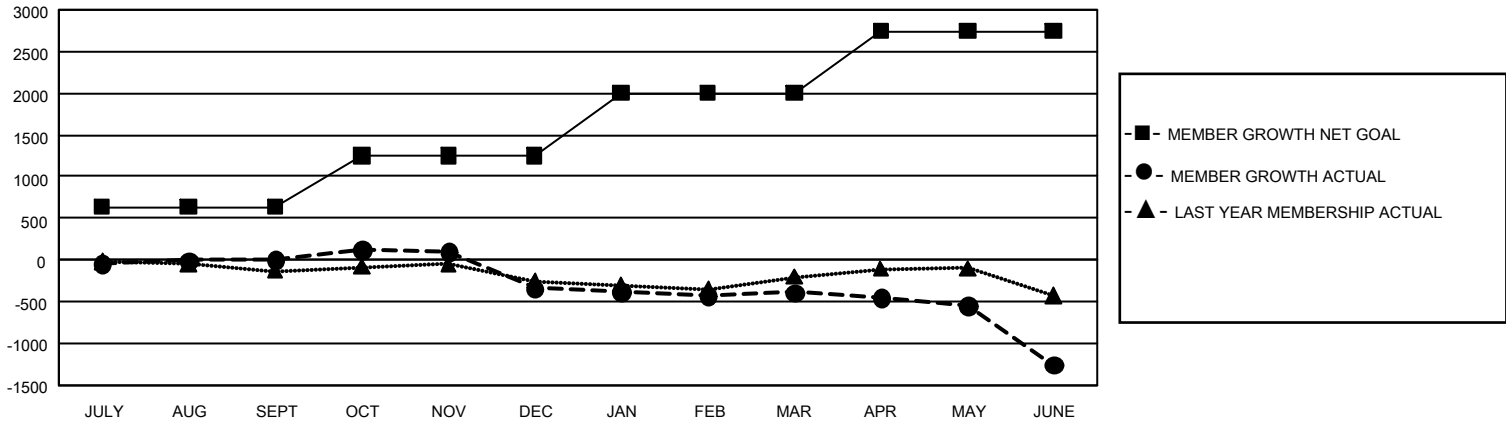
Clubs			
RESULTS FOR 2022-2023			
QUARTER	NEW CLUB GOAL	NEW CLUBS	DROPPED CLUBS
JULY/AUG/SEPT	27	2	8
OCT/NOV/DEC	51	2	12
JAN/FEB/MAR	36	1	3
APR/MAY/JUNE	63	5	18

Members			
RESULTS FOR 2022-2023			
QUARTER	MEMBER GROWTH NET GOAL	MEMBER GROWTH ACTUAL	DROPPED MEMBERS ACTUAL (including transfers)
JULY/AUG/SEPT	634	1,139	983
OCT/NOV/DEC	621	885	1,154
JAN/FEB/MAR	747	853	810
APR/MAY/JUNE	744	1,120	1,875

GOALS AND ACTUAL NEW CLUBS CUMULATIVE



GOALS AND ACTUAL MEMBERS CUMULATIVE



DROPPED CLUBS: 41	658 CLUBS OF 1,055 ADDED 1 OR MORE NEW MEMBERS	GENDER DISTRIBUTION	
		MALE 17,343 (62.00%) FEMALE 10,614 (37.95%) NON BINARY 5 (0.02%) PREFER NOT TO ANSWER 10 (0.04%)	
DROPPED MEMBERS		CLICK HERE FOR CUMULATIVE MEMBERSHIP DATA	
DECEASED 388 CLUB CANCELLED 273 OTHER 4,163 TOTAL 4,824	TOTAL FAMILY UNIT MEMBERS 4,409 FAMILY MEMBERS PAYING HALF DUES 2,257		